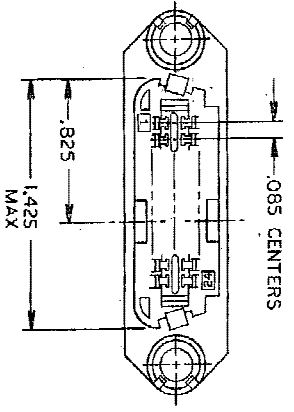


SAVE AS THICK FLANGE EXCEPT AS SHOWN



1. THE CONTACT SURFACES OF THE TERMINALS ARE COATED WITH LUBRICANT.
 2. ALL DIMENSIONS SHOWN ARE FOR REFERENCE ONLY UNLESS OTHERWISE SPECIFIED.
- △ MATERIAL:
- HOUSING - THERMOPLASTIC (BLACK)
 TERMINALS - HIGH STRENGTH COPPER ALLOY PLATED WITH .000030 MIN GOLD OR GOLD FLASH OVER .000030 MIN PALLADIUM NICKEL ON CONTACT MATING SURFACE. .000050 MIN NICKEL UNDERPLATE OVER ENTIRE TERMINAL.
4. WIRE SIZE: 24 & 26 AWG SOLID & 24 AWG 7 STRANDS OF COPPER CONDUCTORS. MAX INSULATION DIAMETER OF .045 IS ACCEPTABLE FOR MOST APPLICATIONS.
- △ CORING MAY OR MAY NOT APPEAR AND IS AT THE DISCRETION OF TFCO ELECTRONICS.

REV. NO.		DATE		REVISIONS	
GP	00	J	11/18/04	REVISION	20/NOV/04 ZR WJA
REVISED PER ECO-06-00655					

DIMENSIONS		TOLERANCES		FINISHES	
INCHES	MILLIMETERS	FRACTIONS	DECIMALS	PLATING	TEXTURE
± .005	± .025	1/16	0.005	AS PLATED	AS SHOWN
± .002	± .010	1/32	0.002	AS PLATED	AS SHOWN
± .001	± .005	1/64	0.001	AS PLATED	AS SHOWN
± .0005	± .002	1/128	0.0005	AS PLATED	AS SHOWN

THIN FLANGE	2-552273-1
THICK FLANGE	552273-1
DESCRIPTION	PART NO

THIS DRAWING IS A CONTROLLED DOCUMENT.	REV. NO.	DATE	BY
	1-2-00	1-1-00	WJE
APPROVED	DATE	BY	
APPLICATION SPEC	DATE	BY	
CUSTOMER DRAWING	DATE	BY	